

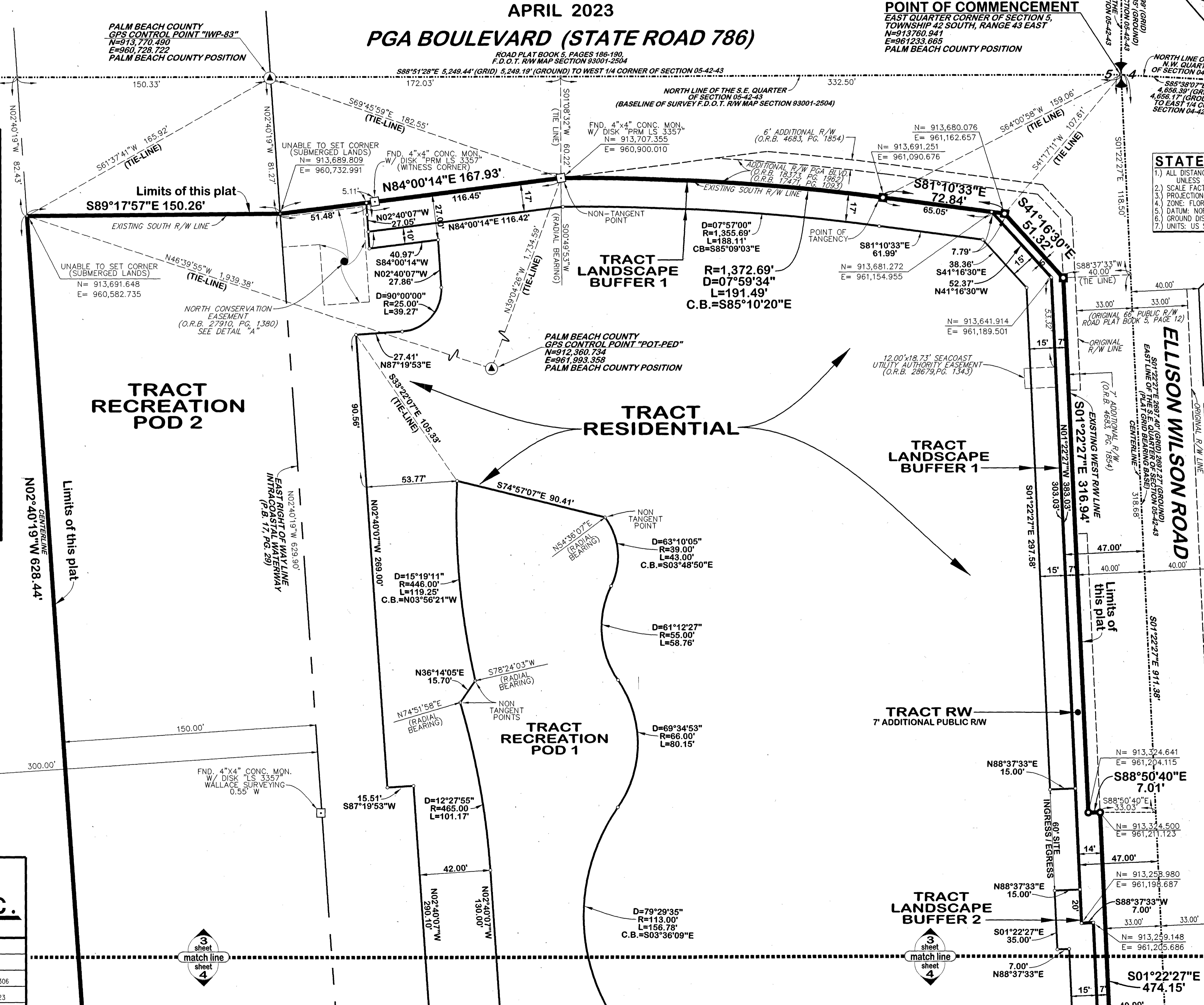
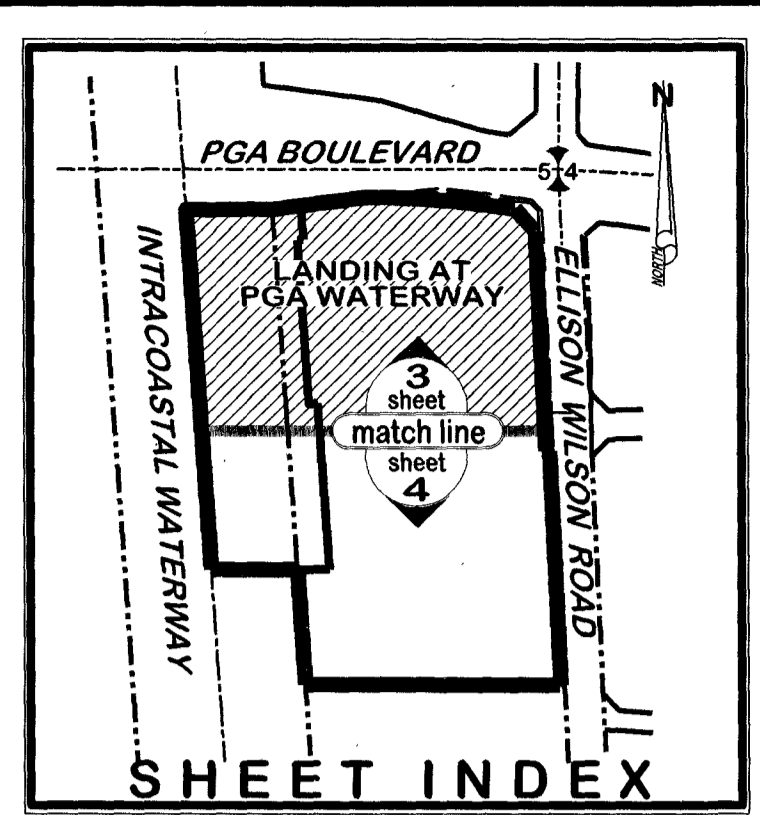
LANDING AT PGA WATERWAY

BEING A REPLAT OF HATTIES LANDING M.U.P.D., AS RECORDED IN PLAT BOOK 114, PAGES 195 & 196, PUBLIC RECORDS OF PALM BEACH COUNTY, FLORIDA AND AN UNPLATTED PORTION OF THE SOUTHEAST QUARTER OF SECTION 5, TOWNSHIP 42 SOUTH, RANGE 43 EAST CITY OF PALM BEACH GARDENS, PALM BEACH COUNTY, FLORIDA

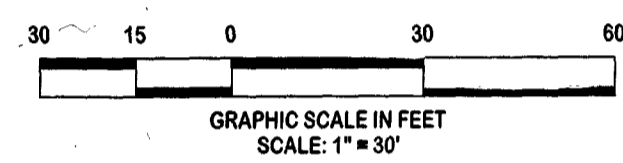
APRIL 2023

PGA BOULEVARD (STATE ROAD 786)

POINT OF COMMENCEMENT
EAST QUARTER CORNER OF SECTION 5,
TOWNSHIP 42 SOUTH, RANGE 43 EAST
N=913,760.941
E=961,233.665
PALM BEACH COUNTY POSITION



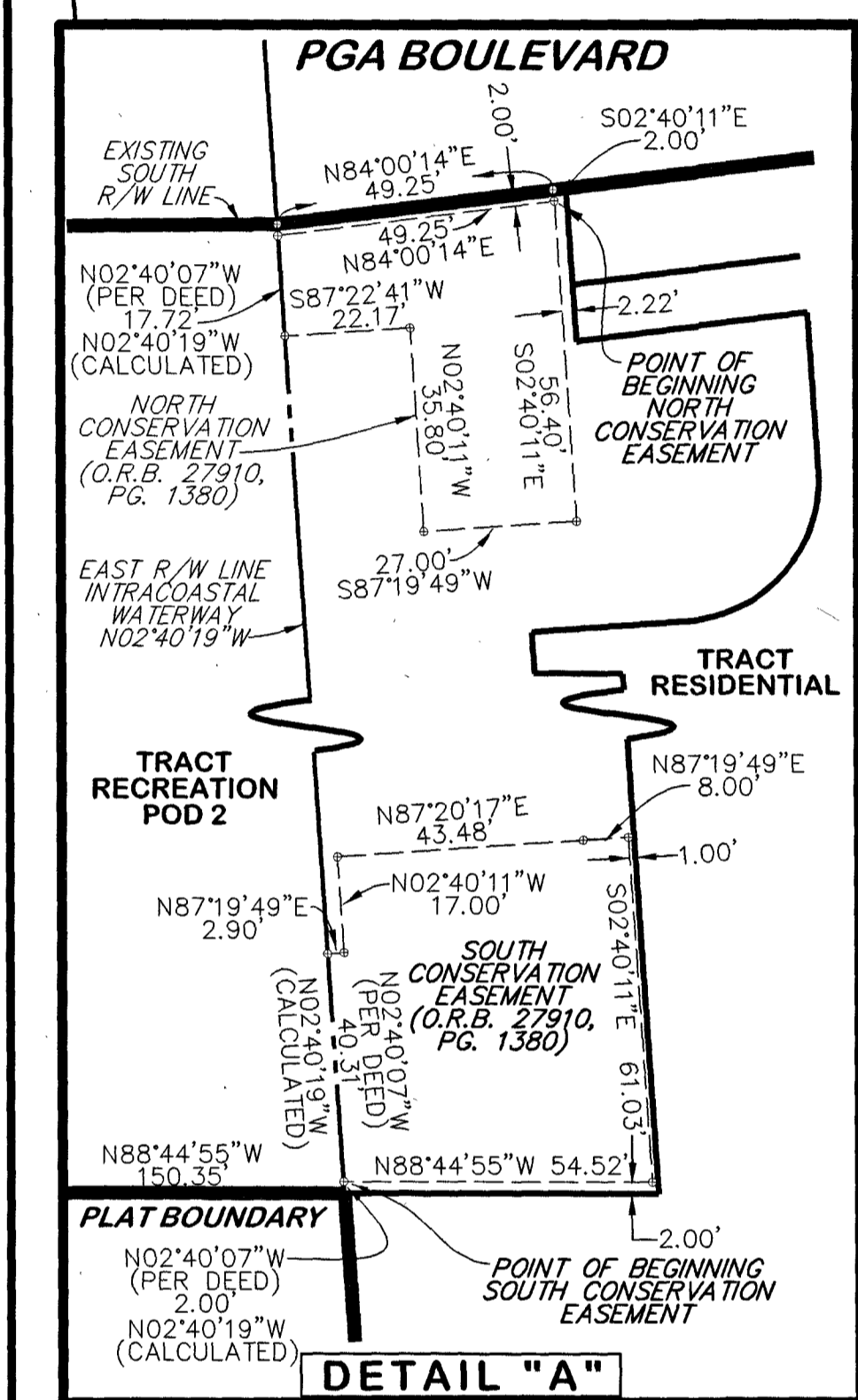
STATE PLANE NOTES:
1. ALL DISTANCES SHOWN HEREON ARE GROUND DISTANCES, UNLESS OTHERWISE NOTED.
2. SCALE FACTOR: 1.000047877
3. PROJECTION: TRANSVERSE MERCATOR
4. ZONE: FLORIDA EAST
5. DATUM: NORTH AMERICAN DATUM OF 1983/1990 ADJUSTMENT
6. GROUND DISTANCE X SCALE FACTOR = GRID DISTANCE
7. UNITS: US SURVEY FEET



LEGEND:
■ DENOTES SET "PRM" CURVE'S RADIUS STAMPED "PRM LB 4431"
○ DENOTES SET "PRM" SET MAG NAIL & DISK STAMPED "PRM LB 4431"

ABBREVIATIONS:
D = CURVE'S DELTA ANGLE
R = CURVE'S RADIUS
L = CURVE'S ARC LENGTH
C.B. = CURVE'S CHORD BEARING
(GRID) = STATE PLANE BEARING & DISTANCE
CONC. = CONCRETE
F.D.O.T. = FLORIDA DEPARTMENT OF TRANSPORTATION
FND. = FOUND
L.A.E. = LIMITED ACCESS EASEMENT
MON. = MONUMENT
O.R.B. = OFFICIAL RECORD BOOK
P.B. = PLAT BOOK
P.B.Co. = PALM BEACH COUNTY
PG. = PAGE
PGS. = PAGES
PRM = PERMANENT REFERENCE MONUMENT
R/W = RIGHT OF WAY
W/ = WITH

THIS INSTRUMENT WAS PREPARED BY KENNETH J. BUCHANAN P.S.M., IN AND FOR THE OFFICES OF LIDBERG LAND SURVEYING, INC., 675 WEST INDIANTOWN ROAD, SUITE 200, JUPITER, FLORIDA 33458. TELEPHONE (561) 746-8454.



LIDBERG LAND SURVEYING, INC.
LB4431 675 West Indiantown Road, Suite 200, Jupiter, Florida 33458 TEL: 561-746-8454
CAD: KJUST \ 054243 \ 21-076 \ 21-076E-306 \ 21-076E-306.DGN
REF:
FLD: FB. PG. JOB: 21-076E-306
OFF: CASASUS DATE: APRIL 2023
CKD: K.J.B. SHEET 3 OF 4 DWG: D21-076P